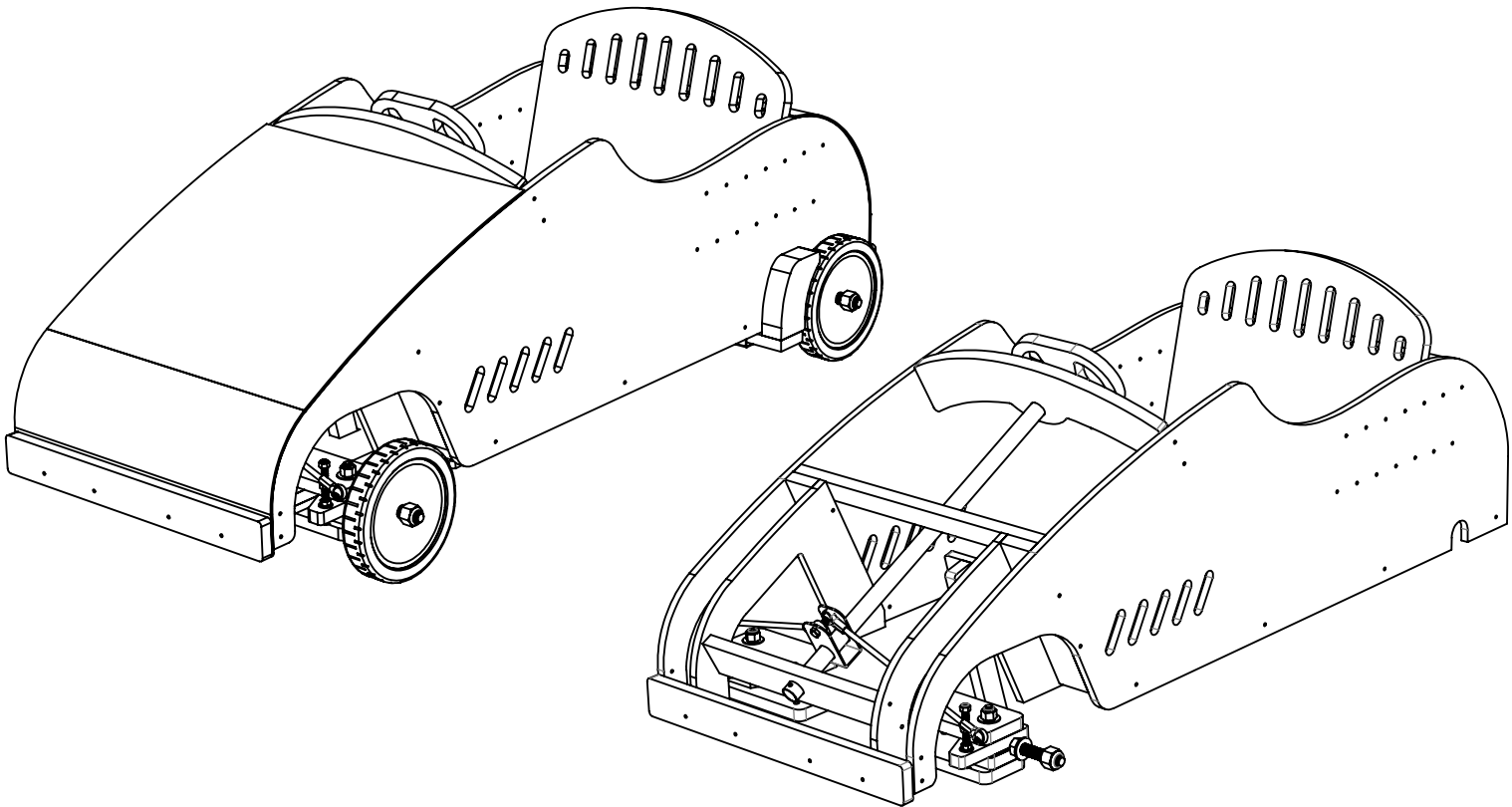
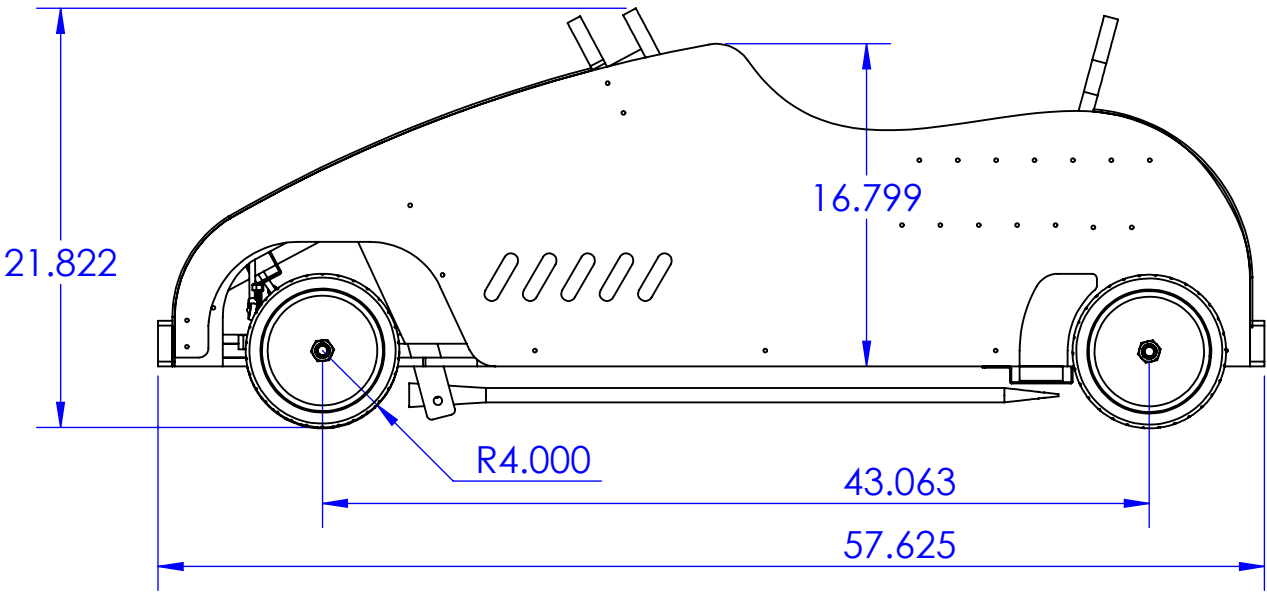
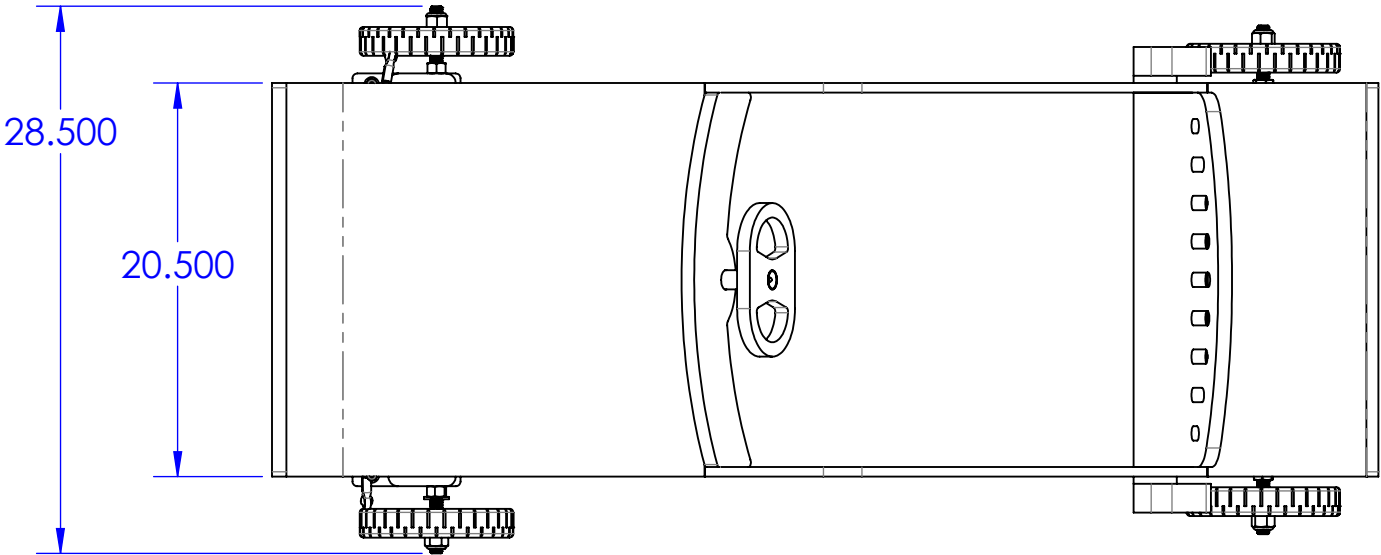
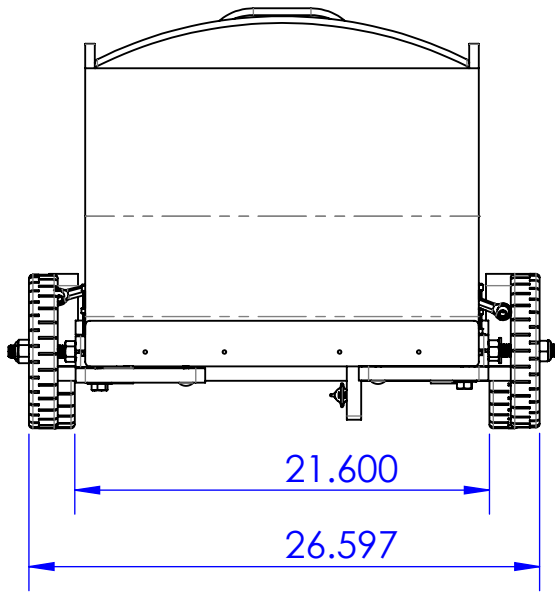


REVISIONS			
REV.	DESCRIPTION	DATE	BY
A	INITIAL RELEASE	3/27/2018	RB



NOTE: SEE PAGE 2 FOR
EXPLODED VIEW AND
PARTS LIST



This Supplier Preexisting Material is exclusively the intellectual property of OnQ Solutions and all rights reserved by OnQ Solutions. OnQ Solutions has granted _____ and its affiliates and subsidiaries a non exclusive, worldwide, royalty-free, irrevocable, non-sublicenable, perpetual license to use, execute, reproduce, display, perform, distribute copies of, and prepare derivative works of the Supplier Preexisting Material for _____ internal use in furtherance of its business operations. This Supplier Preexisting Material shall not be disclosed to unaffiliated third parties or used in relation to products, processes or tangible things from an entity other than OnQ Solutions.



UNLESS OTHERWISE SPECIFIED	
IN. TOL.	MM TOL.
.XXX = ±.010	X.XX = ±0.2
.XX = ±.020	X.X = ±0.5
.X = ±.030	X. = ±1.0
HOLES = ±.005	HOLES = ±0.1

DIMENSIONS ARE IN INCHES [MM]
DO NOT SCALE DRAWING
INTERPRET GEOMETRIC TOLERANCE PER: ANSI Y-14.5M-1982
CAD GENERATED DRAWING (SW) DO NOT MANUALLY REVISE

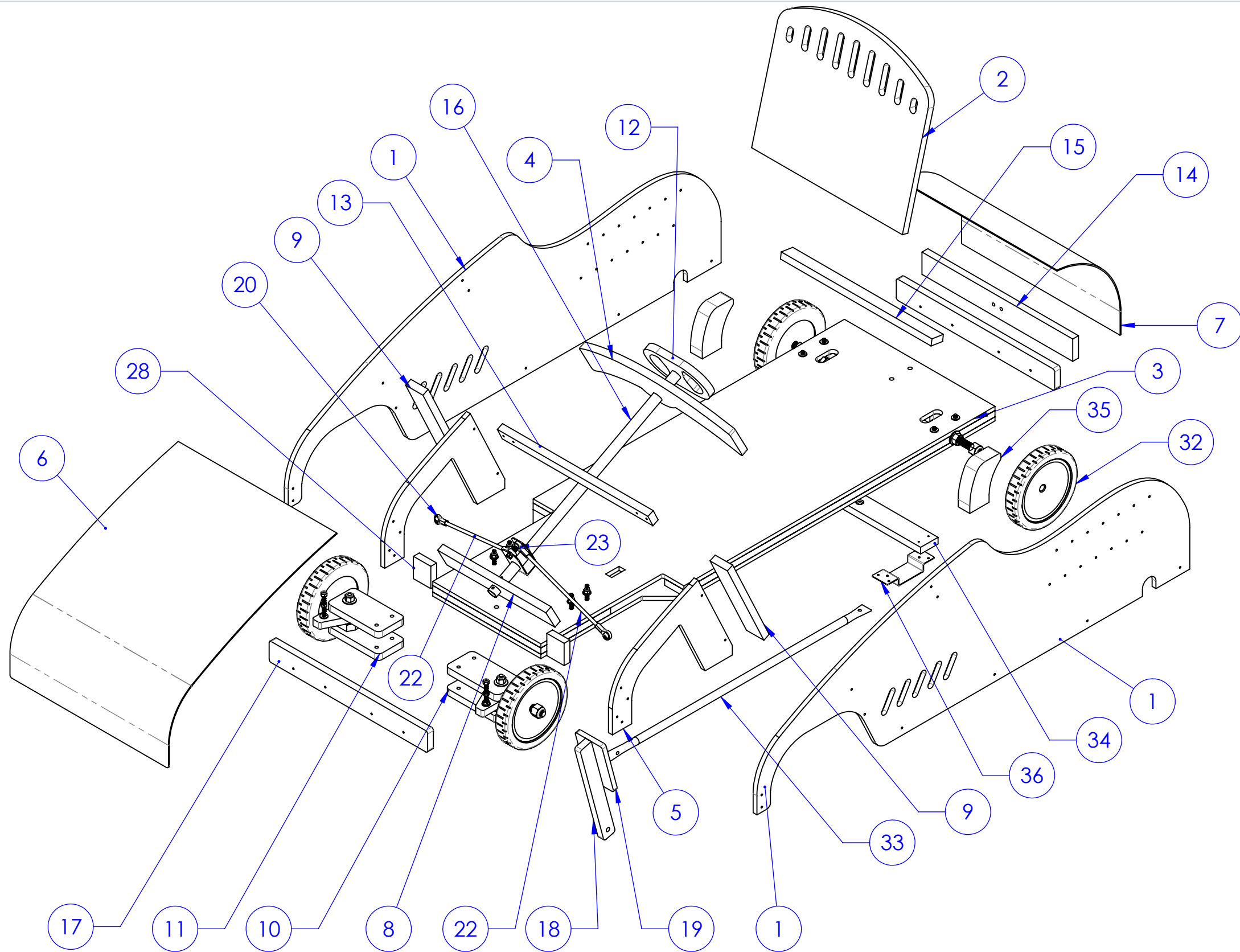
THIRD ANGLE
PROJECTION



FINISH
PART SPECIFIC
MATERIAL
PART SPECIFIC

PART DESCRIPTION
GO KART GENERAL ASSEMBLY

PART NUMBER
17722-GA002
DRAWN
RB
DATE
3/27/2018
SHEET
1 of 3
REV
A



ITEM NO.	PART NUMBER	DESCRIPTION	Default/QTY.
1	17722-003	SIDE PANEL	2
2	17722-004	SEAT BACK PANEL	1
3	17722-SA005	CHASIS SUB ASSEMBLY	1
4	17722-005	DASH CROSSBAR	1
5	17722-013	FRONT FENDER PANEL	2
6	12345-011	HOOD PANEL	1
7	12345-012	TRUNK PANEL	1
8	17722-015	FRONT CROSSBAR	1
9	17722-016	FRONT BRACE PANEL	2
10	17722-SA010	FRONT RIGHT WHEEL MOUNT	1
11	17722-SA011	FRONT LEFT WHEEL MOUNT	1
12	17722-017	STEERING WHEEL	1
13	17722-023	FRONT UPPER CROSSBAR	1
14	17722-024	BACK CROSSBAR	1
15	17722-025	BACK UPPER CROSSBAR	1
16	17722-MA001	STEERING COLUMN WELDMENT	1
17	17722-029	FRONT BUMPER	2
18	17722-030	BRAKE ARM	1
19	17722-031	BRAKE PEDAL	1
20	BALL END1		4
21	BALL END2		4
22	98957A129	5/16-24 THREADED ROD	2
23	92198A687	5/16-18 X 1 1/2 HEX HEAD SCREW	1
24	93548A599	5/16-18 x 4" CARRIAGE BOLT	4
25	92917A185	.340" ID STEEL WASHER	8
26	90640A130	5/16-18 NYLOCK HEX NUT	4
27	93548A591	5/16-18 X 2" CARRIAGE BOLT	4
28	17722-032	SPACER BLOCK	2
29	90473A233	5/8-11 HEX NUT	2
30	98023A035	WASHER FOR 5/8 SCREW	2
31	90648A235	5/8-11 NYLOCK NUT	2
32	hand truck wheel		2
33	17722-M012	BRAKE ROD	1
34	17722-033	BRAKE-CROSSBAR	1
35	17722-034	BRAKE SHOE	2
36	17722-M013	BRAKE STRAP	2

This Supplier Preexisting Material is exclusively the intellectual property of OnQ Solutions and all rights reserved by OnQ Solutions. OnQ Solutions has granted _____ and its affiliates and subsidiaries a non exclusive, worldwide, royalty-free, irrevocable, non-sublicensable, perpetual license to use, execute, reproduce, display, perform, distribute copies of, and prepare derivative works of the Supplier Preexisting Material for _____ internal use in furtherance of its business operations. This Supplier Preexisting Material shall not be disclosed to unaffiliated third parties or used in relation to products, processes or tangible things from an entity other than OnQ Solutions.



UNLESS OTHERWISE SPECIFIED

IN. TOL.	MM TOL.
.XXX = ±.010	X.XX = ±0.2
.XX = ±.020	X.X = ±0.5
.X = ±.030	X. = ±1.0
HOLES = ±.005	HOLES = ±0.1

DIMENSIONS ARE IN INCHES [MM]
DO NOT SCALE DRAWING
INTERPRET GEOMETRIC TOLERANCE PER: ANSI Y-14.5M-1982
CAD GENERATED DRAWING (SW) DO NOT MANUALLY REVISE

THIRD ANGLE
PROJECTION



FINISH

PART SPECIFIC

MATERIAL

PART SPECIFIC

PART DESCRIPTION

GO KART GENERAL ASSEMBLY

PART NUMBER

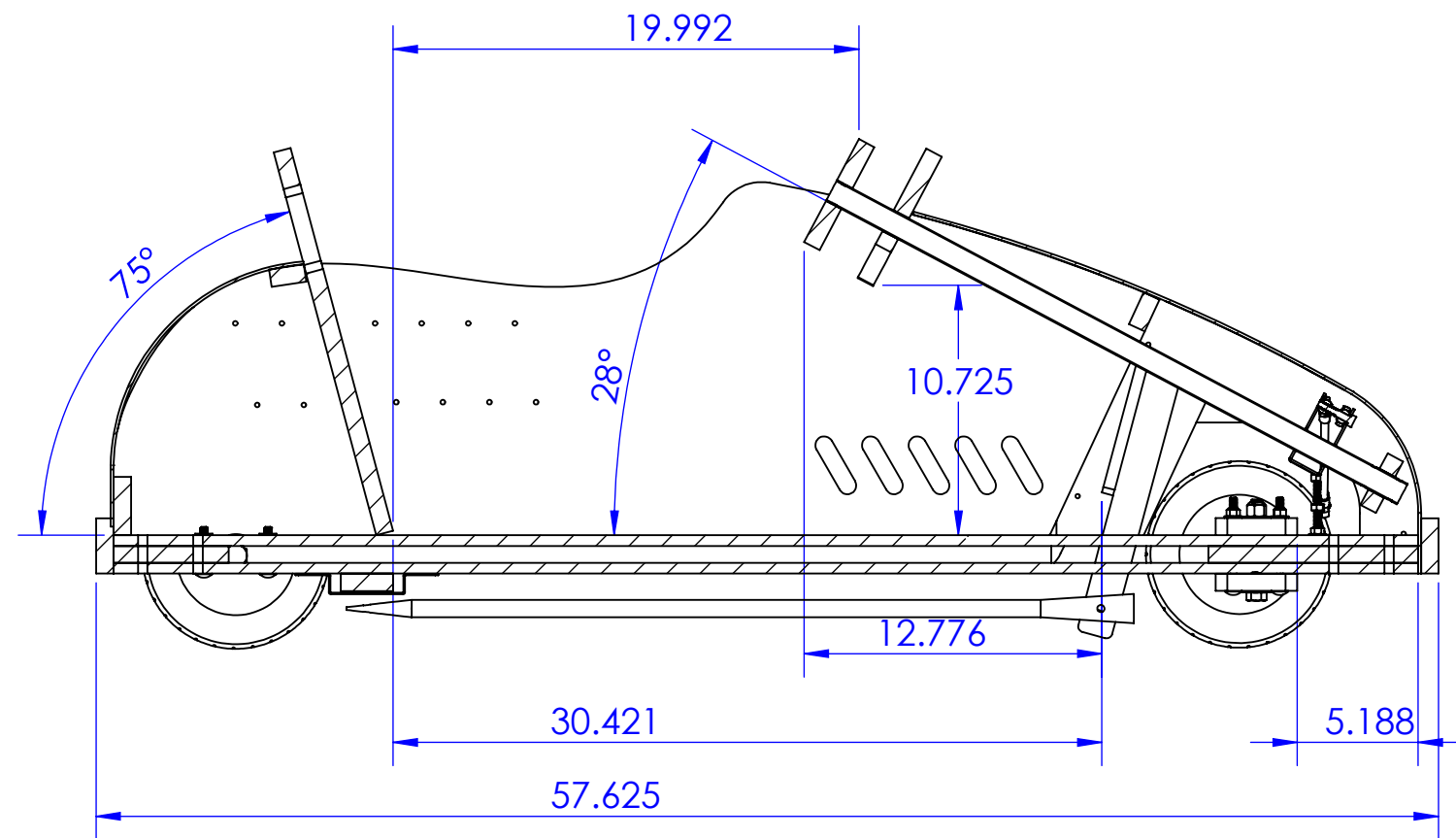
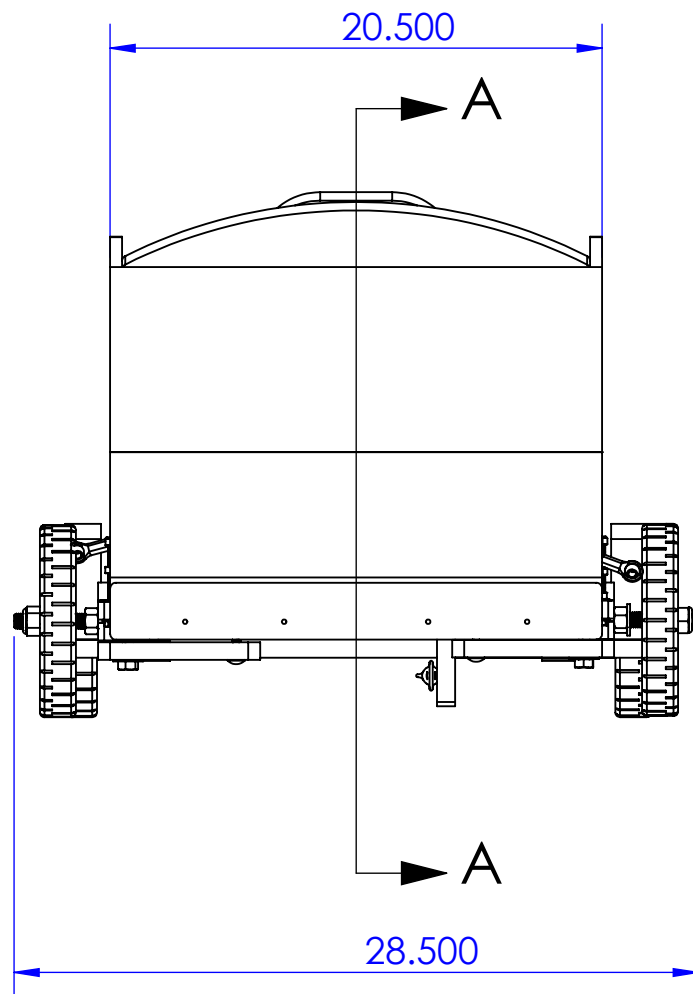
17722-GA002

DRAWN
RB

DATE
3/27/2018

SHEET
2 of 3

REV
A



SECTION A-A

This Supplier Preexisting Material is exclusively the intellectual property of OnQ Solutions and all rights reserved by OnQ Solutions. OnQ Solutions has granted _____ and its affiliates and subsidiaries a non exclusive, worldwide, royalty-free, irrevocable, non-sublicensable, perpetual license to use, execute, reproduce, display, perform, distribute copies of, and prepare derivative works of the Supplier Preexisting Material for _____ internal use in furtherance of its business operations. This Supplier Preexisting Material shall not be disclosed to unaffiliated third parties or used in relation to products, processes or tangible things from an entity other than OnQ Solutions.



UNLESS OTHERWISE SPECIFIED

IN. TOL.	
.XXX	= ±.010
.XX	= ±.020
.X	= ±.030
HOLES	= ±.005

MM TOL.	
X.XX	= ±0.2
X.X	= ±0.5
X.	= ±1.0
HOLES	= ±0.1

DIMENSIONS ARE IN INCHES [MM]
DO NOT SCALE DRAWING
INTERPRET GEOMETRIC TOLERANCE PER: ANSI Y-14.5M-1982
CAD GENERATED DRAWING (SW) DO NOT MANUALLY REVISE

THIRD ANGLE
PROJECTION



FINISH

PART SPECIFIC

MATERIAL

PART SPECIFIC

PART DESCRIPTION

GO KART GENERAL ASSEMBLY

PART NUMBER

17722-GA002

DRAWN
RB

DATE
3/27/2018

SHEET
3 of 3

REV
A